

State Court Structure Charts

Contents

First Document

Understanding the Court Structure Charts

Prototype

Alabama-Michigan

In This Document

Minnesota

Mississippi

Missouri

Montana

Nebraska

Nevada

New Hampshire

New Jersey

New Mexico

New York

North Carolina

North Dakota

Ohio

Oklahoma

Oregon

Pennsylvania

Puerto Rico

Rhode Island

South Carolina

South Dakota

Tennessee

Texas

Utah

Vermont

Virginia

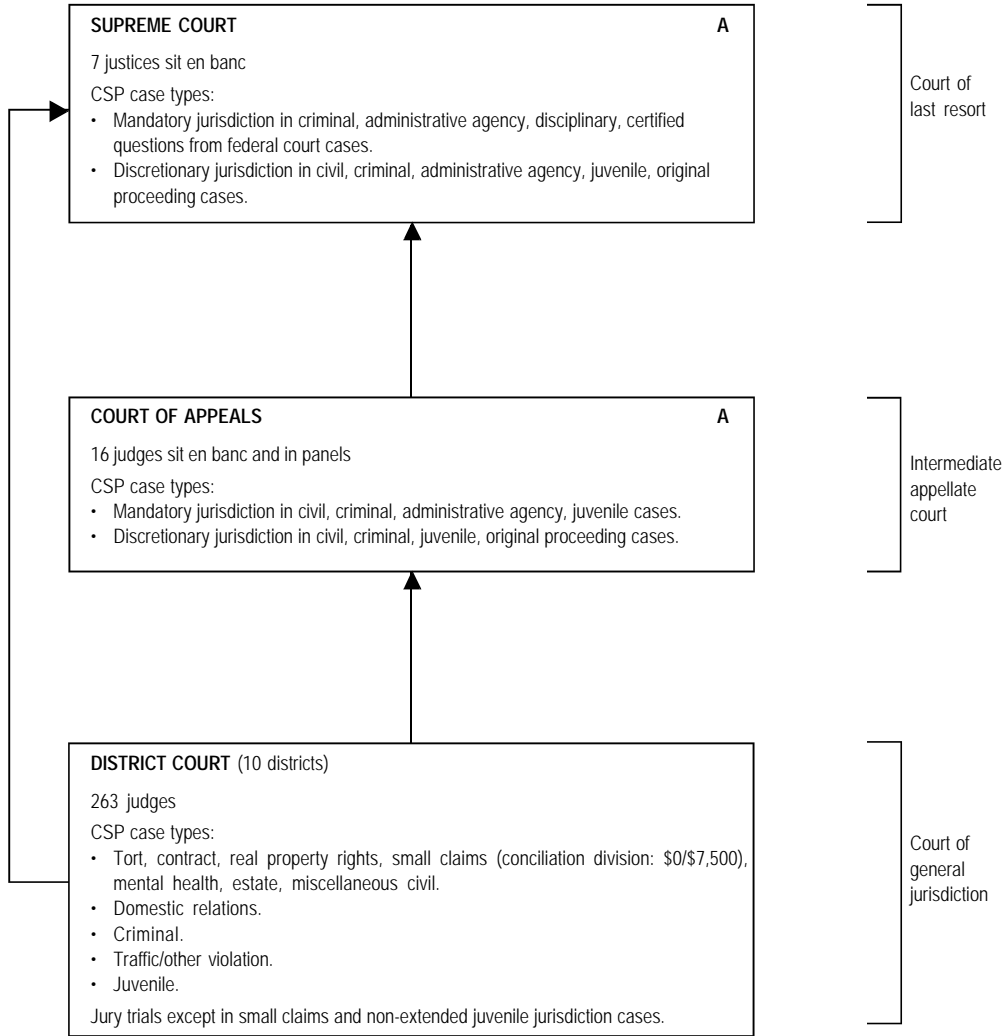
Washington

West Virginia

Wisconsin

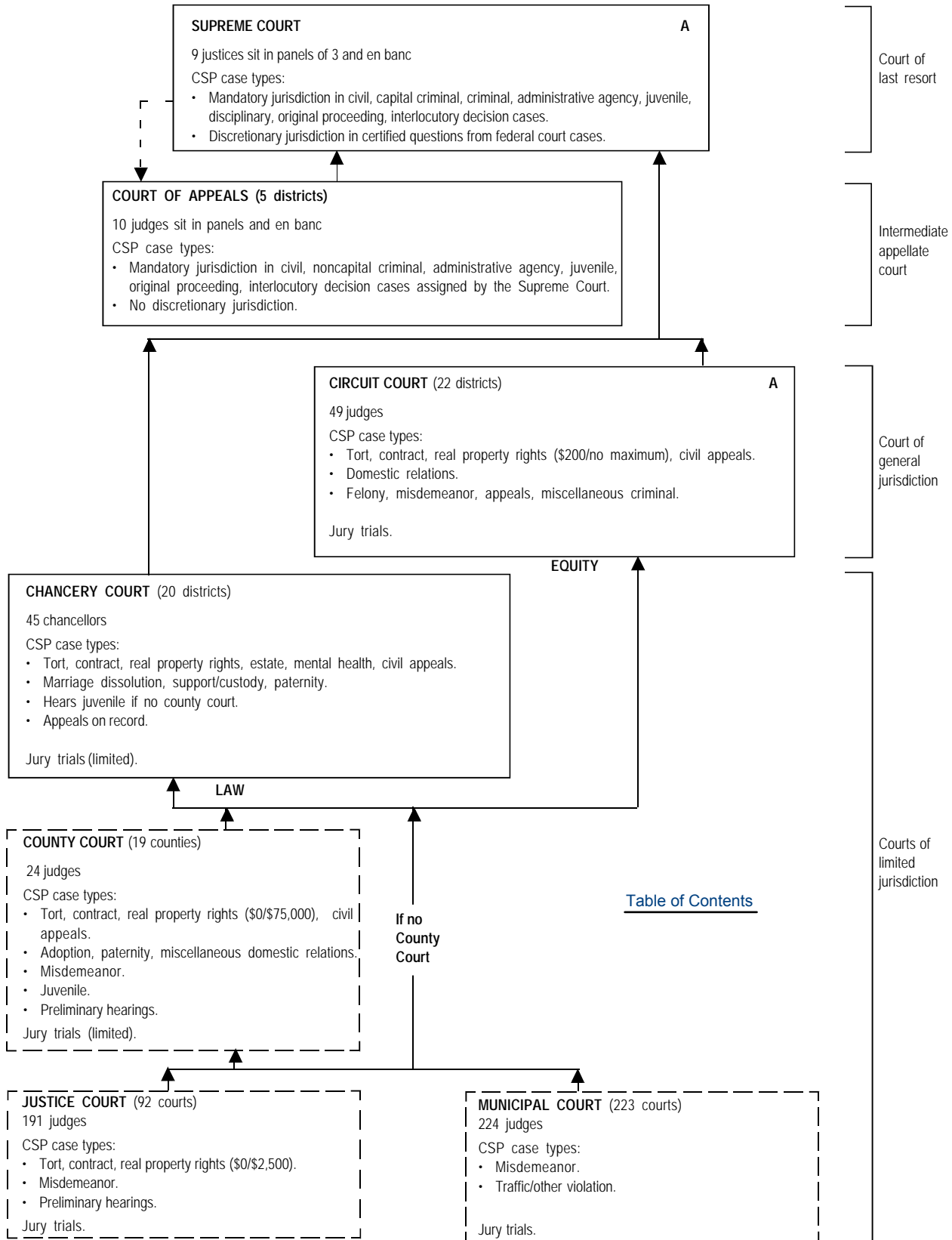
Wyoming

MINNESOTA COURT STRUCTURE, 2002



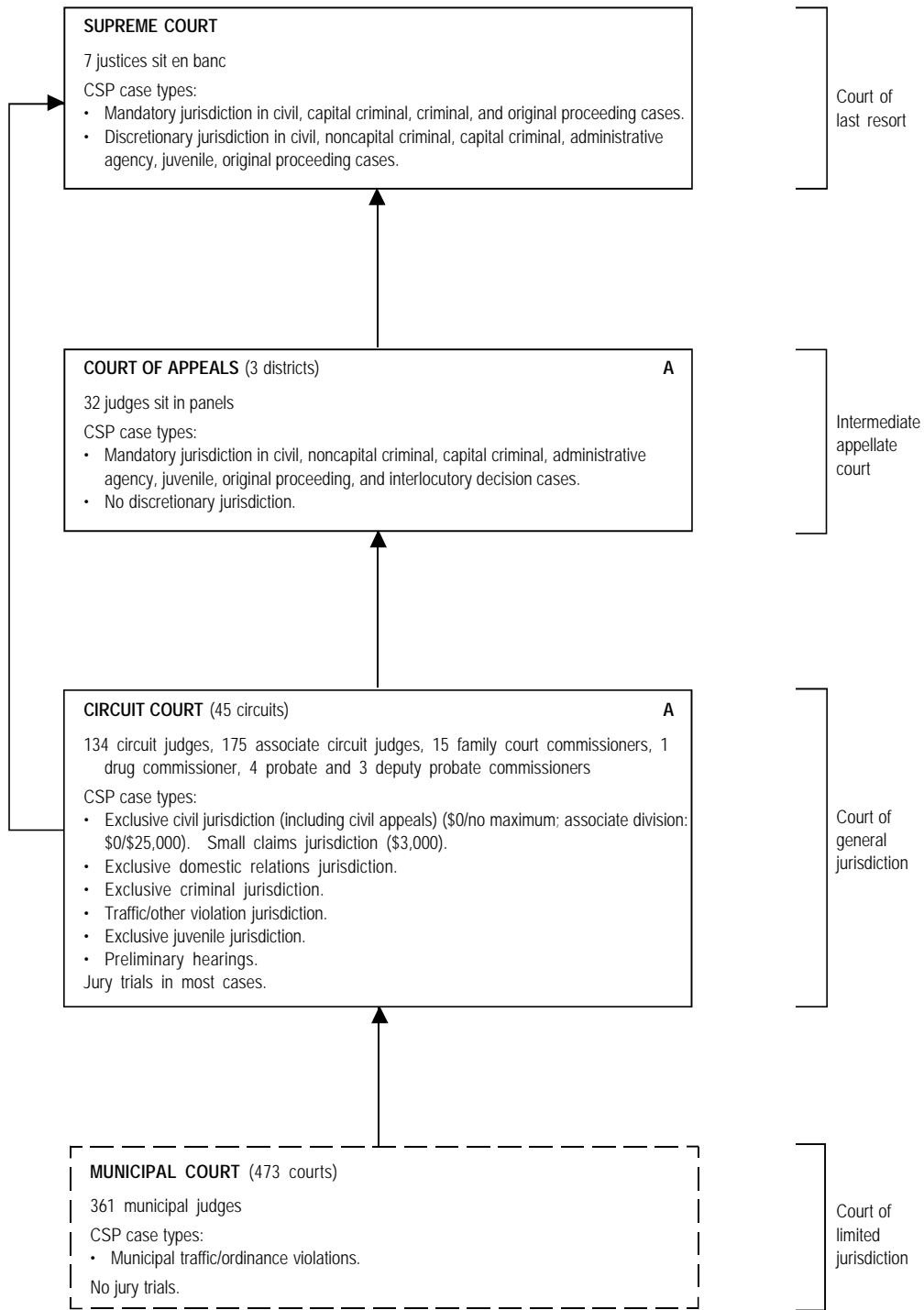
[Table of Contents](#)

MISSISSIPPI COURT STRUCTURE, 2002



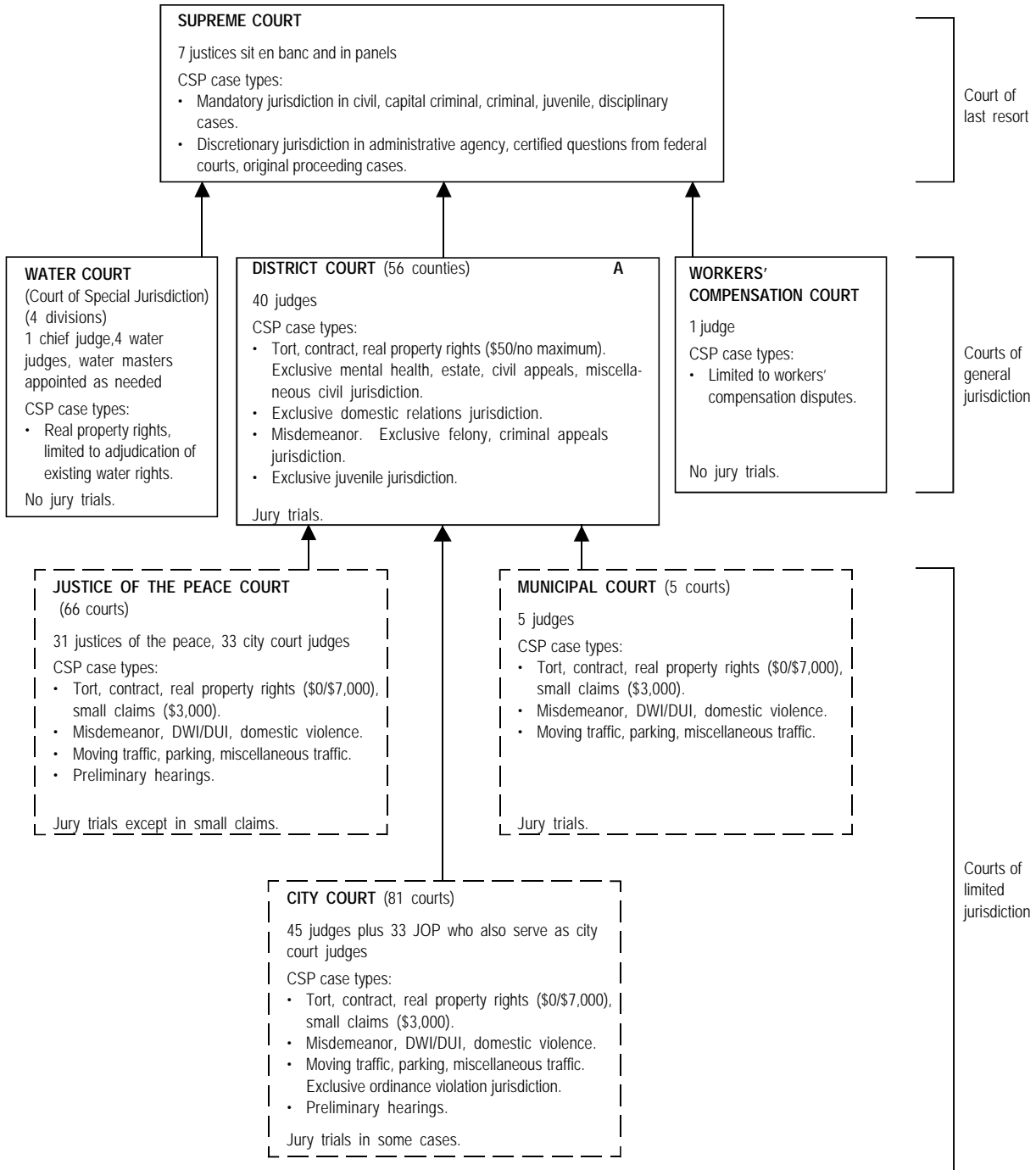
* The Family Court was abolished July 1, 1999 and merged into County Court.
 - - Indicates assignment of cases.

MISSOURI COURT STRUCTURE, 2002



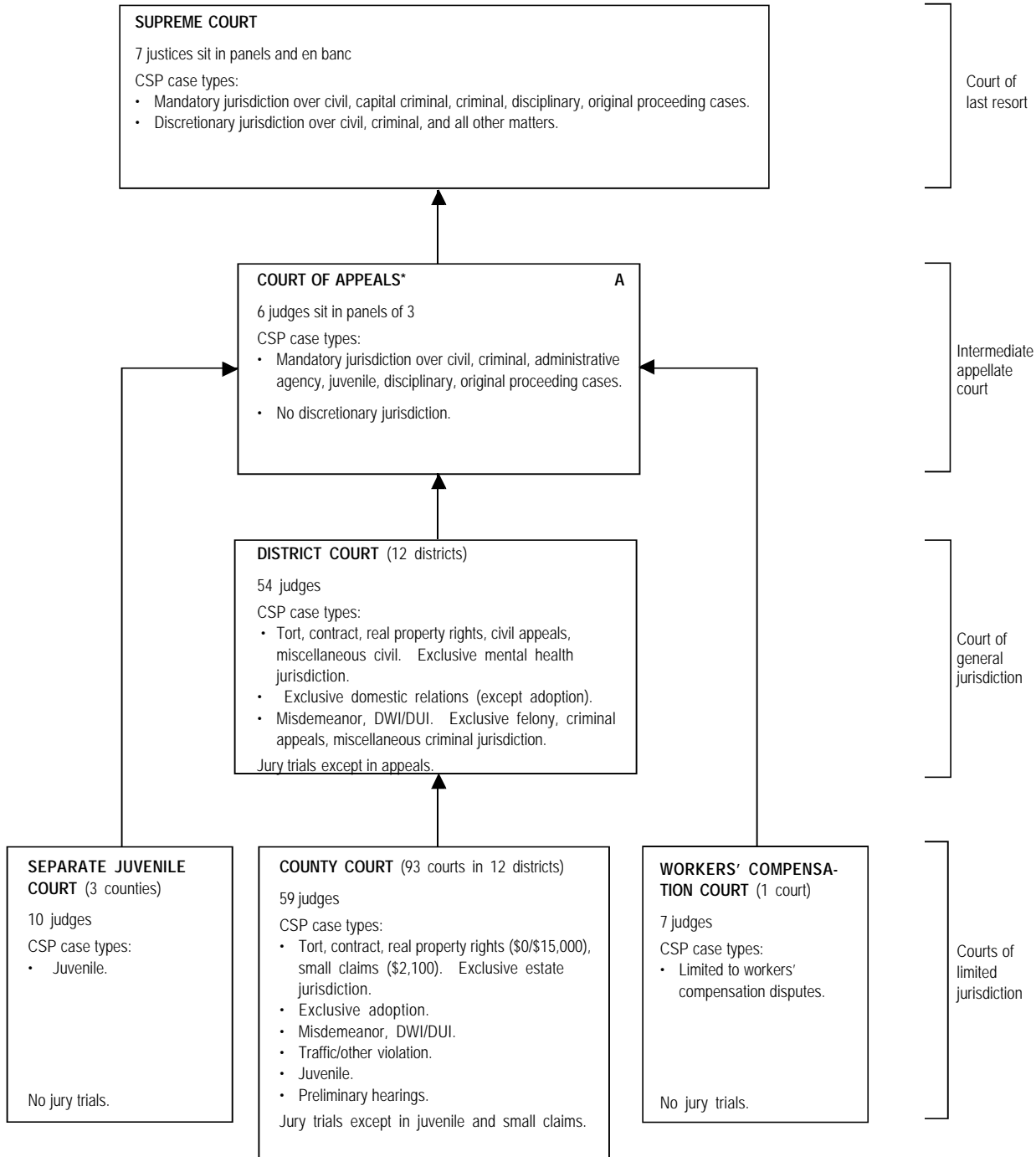
[Table of Contents](#)

MONTANA COURT STRUCTURE, 2002



[Table of Contents](#)

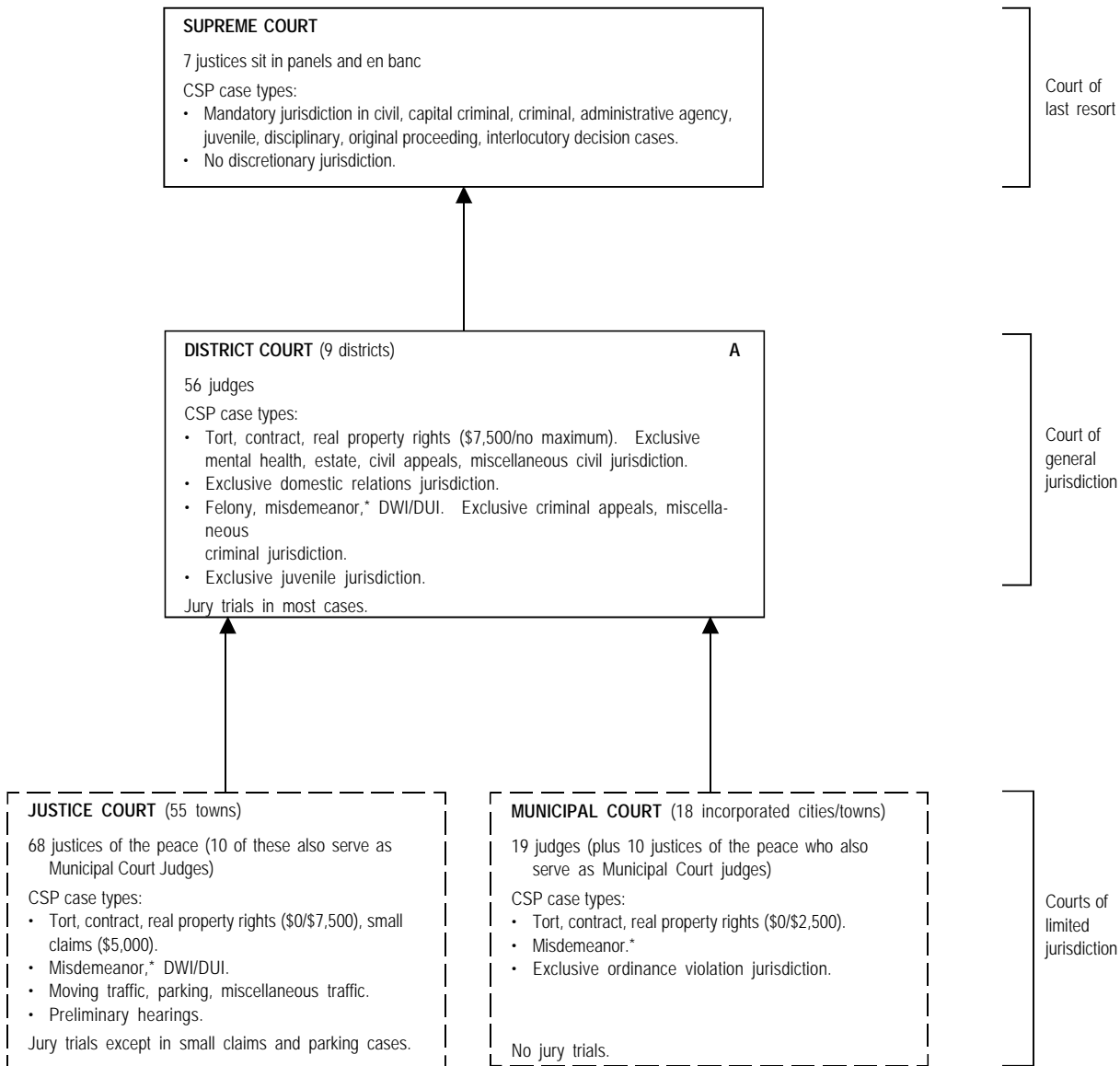
NEBRASKA COURT STRUCTURE, 2002



[Table of Contents](#)

* The Nebraska Court of Appeals was established September 6, 1991.

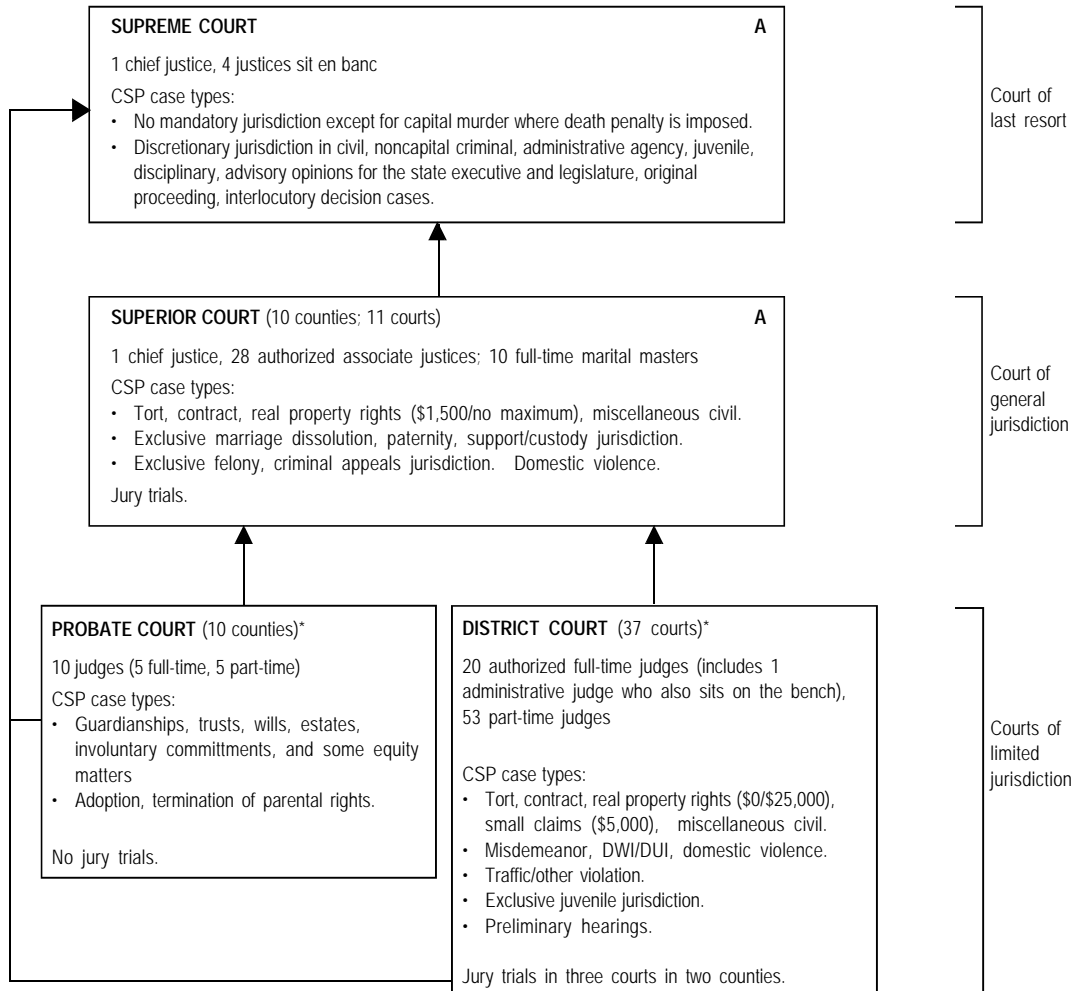
NEVADA COURT STRUCTURE, 2002



[Table of Contents](#)

* District Court hears gross misdemeanor cases; Justice & Municipal Courts hear misdemeanors with fines under \$1,000 and/or sentence of less than six months.

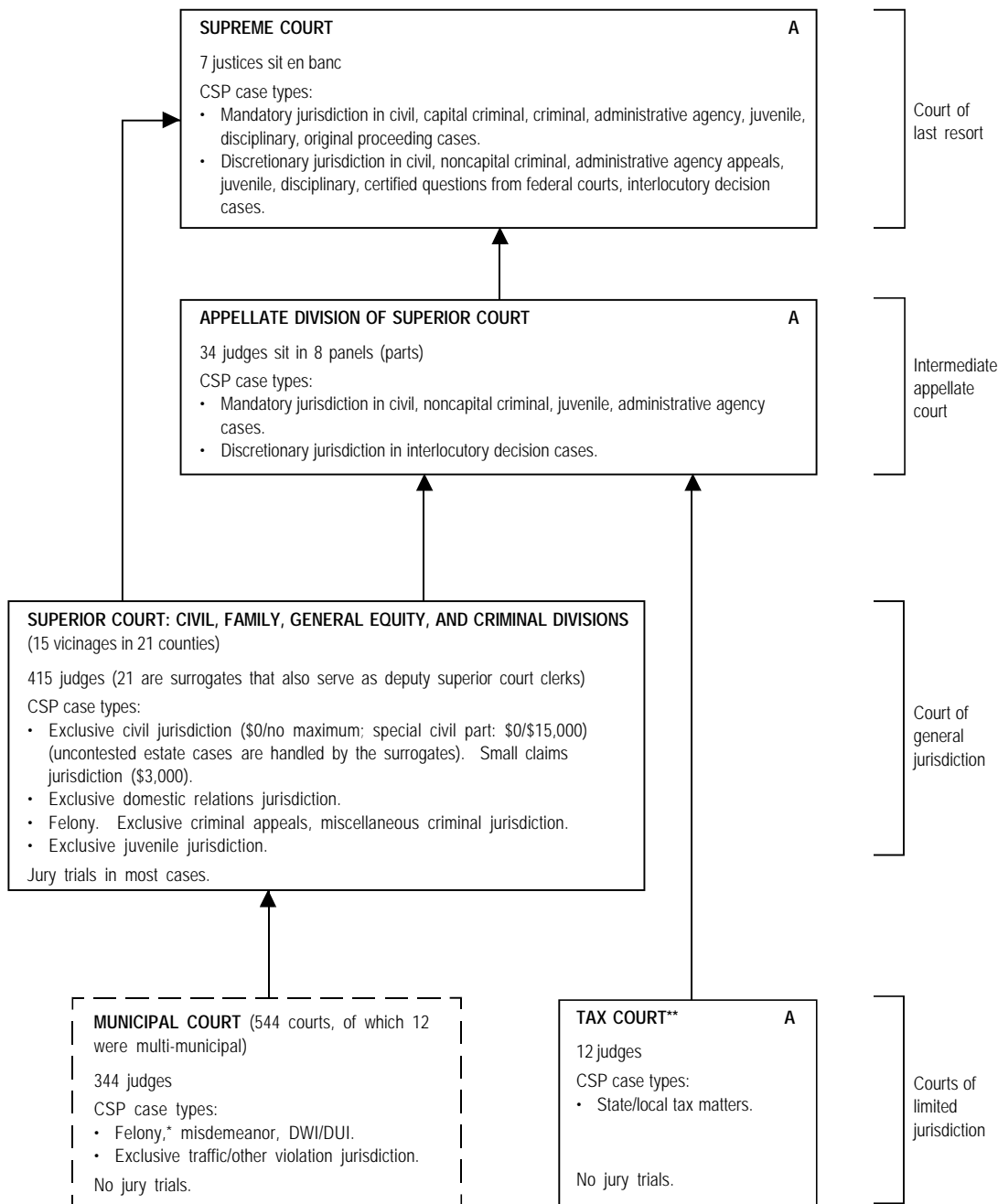
NEW HAMPSHIRE COURT STRUCTURE, 2002



[Table of Contents](#)

* A Family Division Pilot Program was created by the Legislature in 1995 and operates in six district courts and two probate courts. The Family Division Pilot Program includes domestic violence, juvenile, marital matters, termination of parental rights, adoptions, and guardianships over minors in two counties. The municipal court merged with the District Court in May, 2000.

NEW JERSEY COURT STRUCTURE, 2002

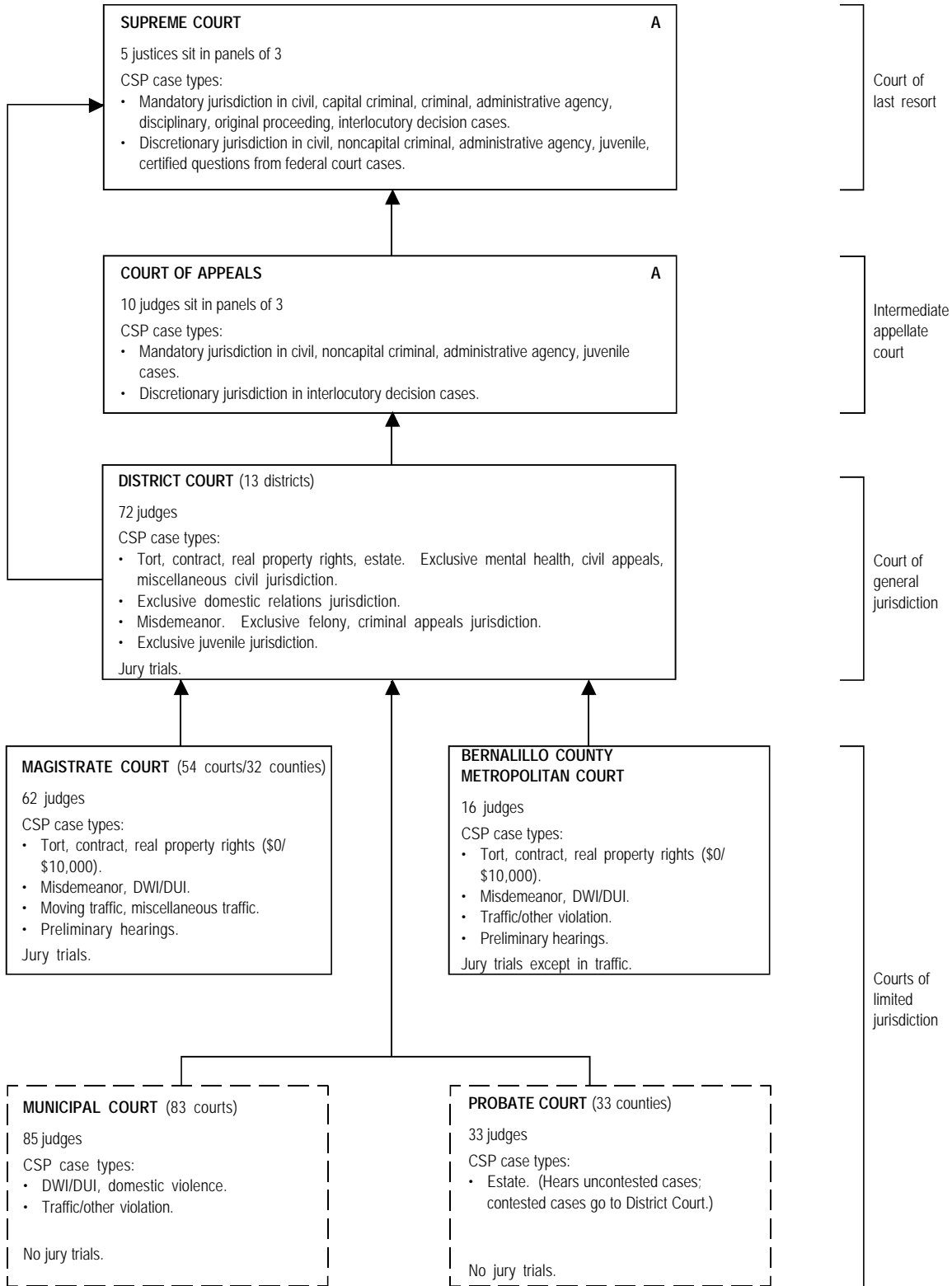


[Table of Contents](#)

* Felony cases are handled on first appearance in the Municipal Courts and then are transferred through the county Prosecutor's office to the Superior Court.

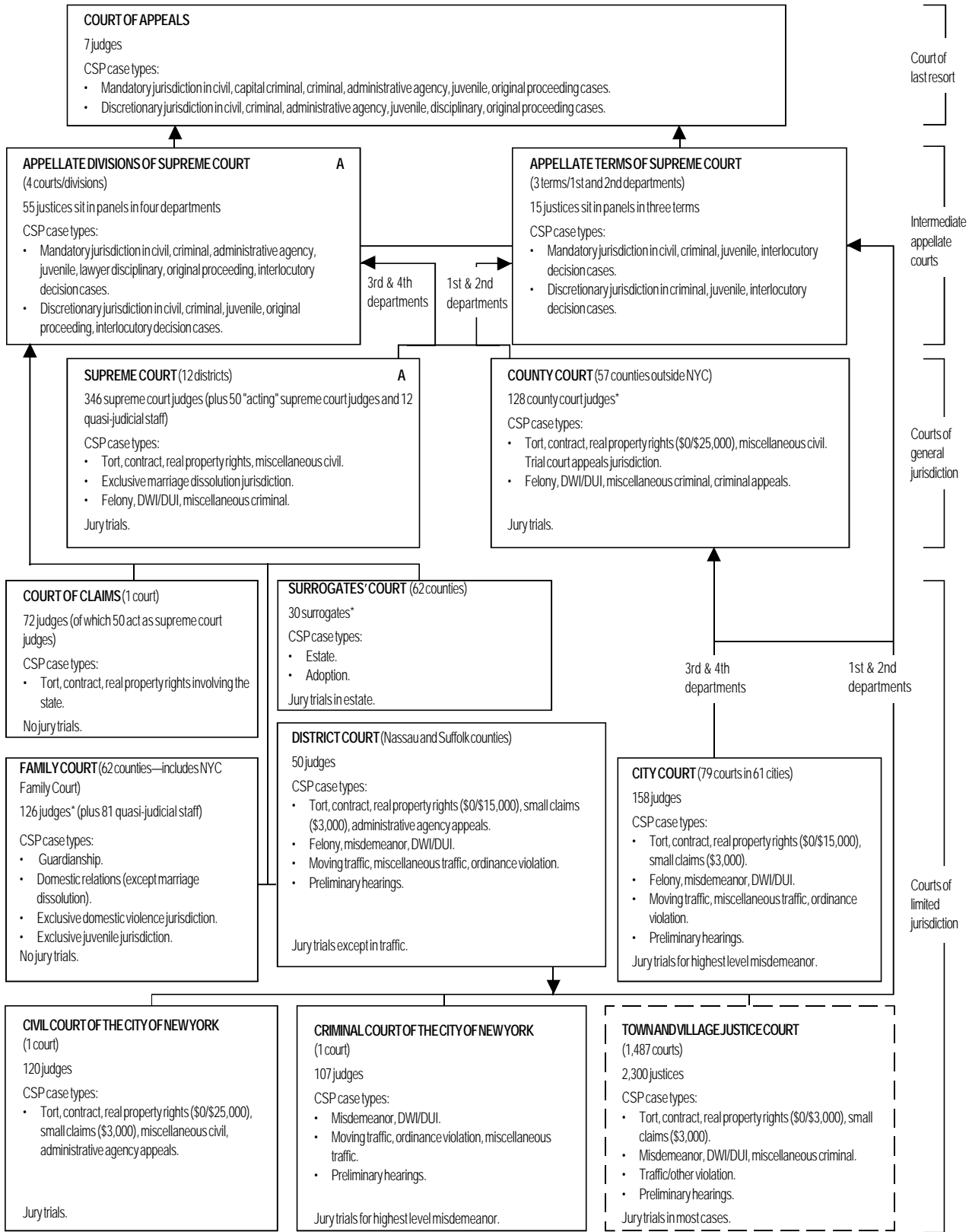
** Tax court is considered a limited jurisdiction court because of its specialized subject matter. Nevertheless, it receives appeals from administrative bodies and its cases are appealed to the intermediate appellate court. Tax court judges have the same general qualifications and terms of service as superior court judges and can be cross assigned.

NEW MEXICO COURT STRUCTURE, 2002



[Table of Contents](#)

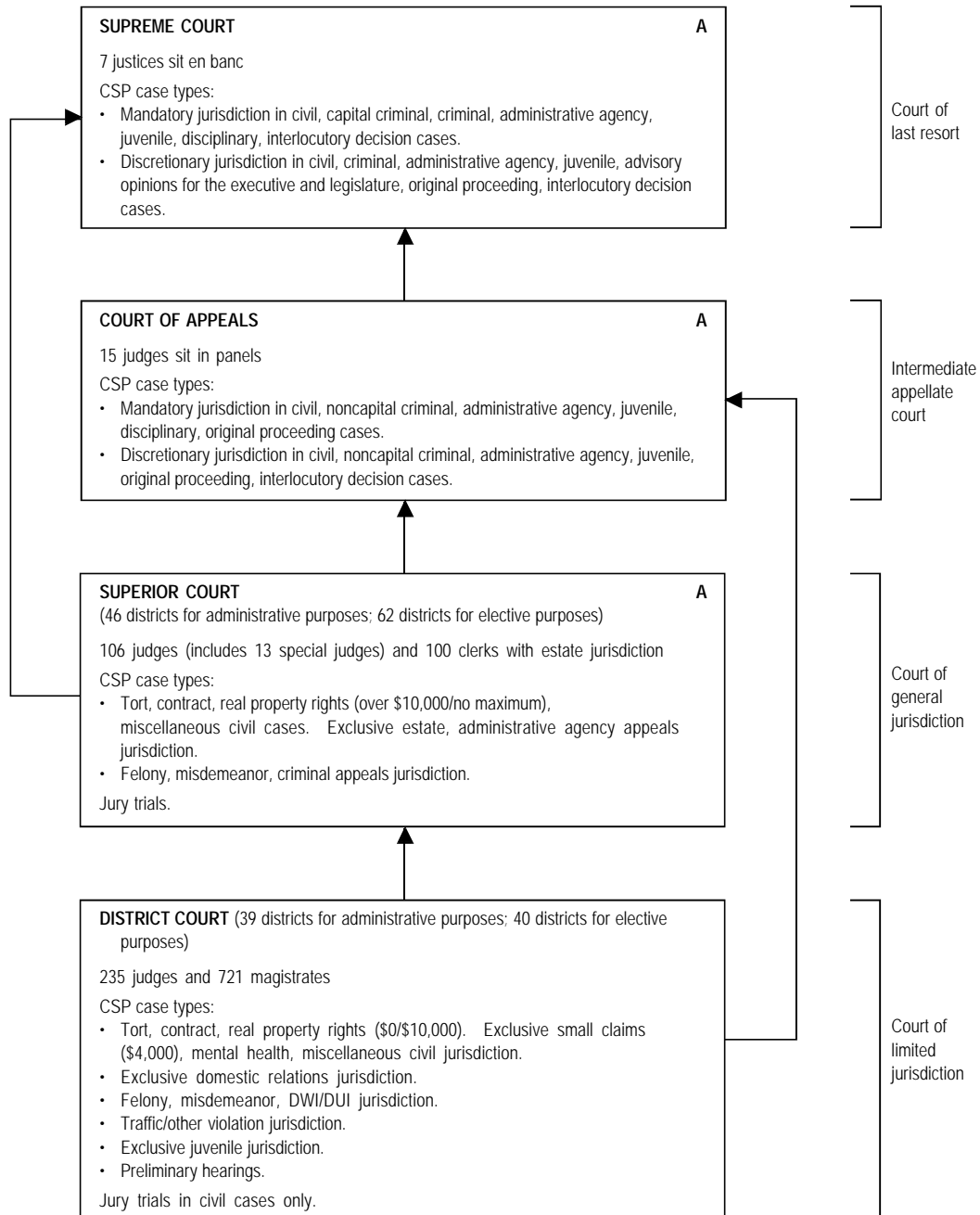
NEW YORK COURT STRUCTURE, 2002*



* Unless otherwise noted, numbers reflect statutory authorization. Many judges sit in more than one court so the number of judgeships indicated in this chart does not reflect the actual number of judges in the system. Fifty County Court judges also serve Surrogates' Court and six County Court judges also serve Family Court.

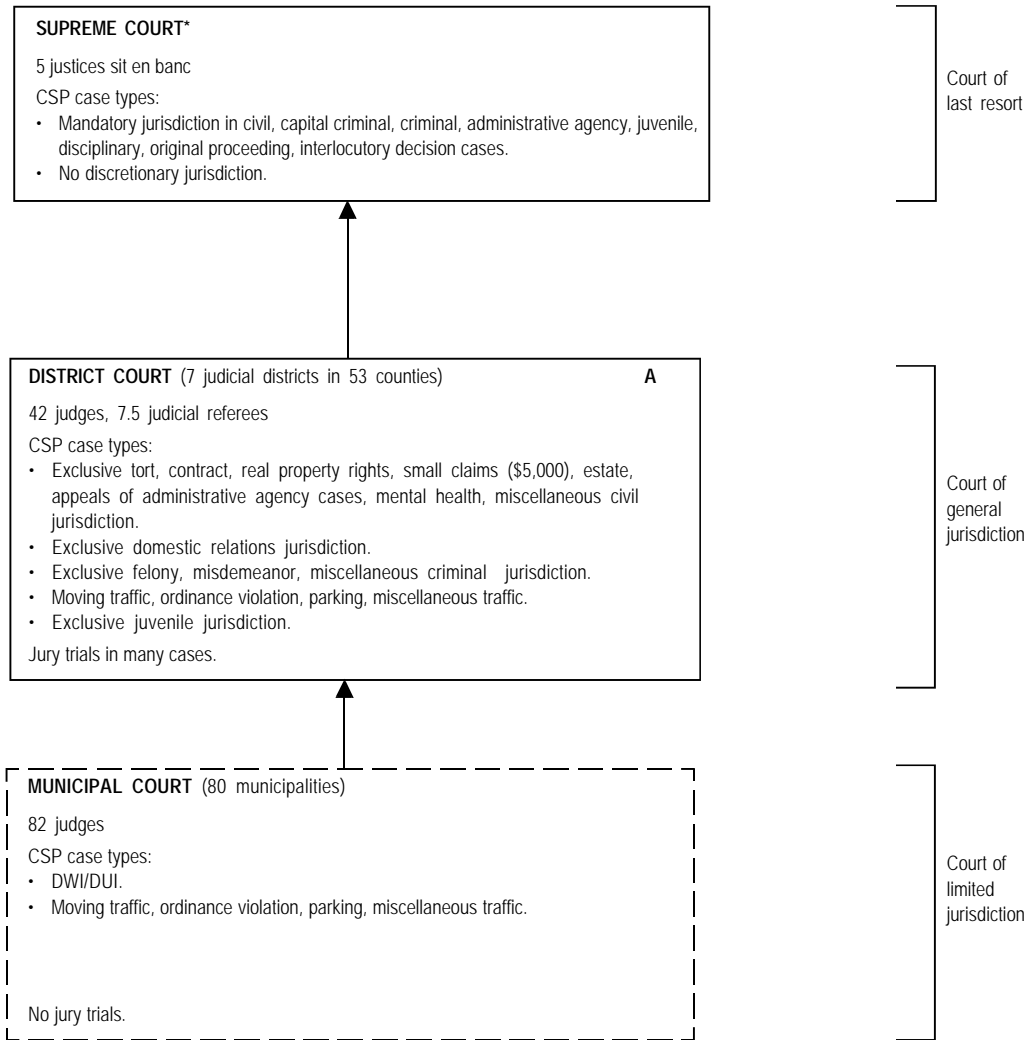
[Table of Contents](#)

NORTH CAROLINA COURT STRUCTURE, 2002



[Table of Contents](#)

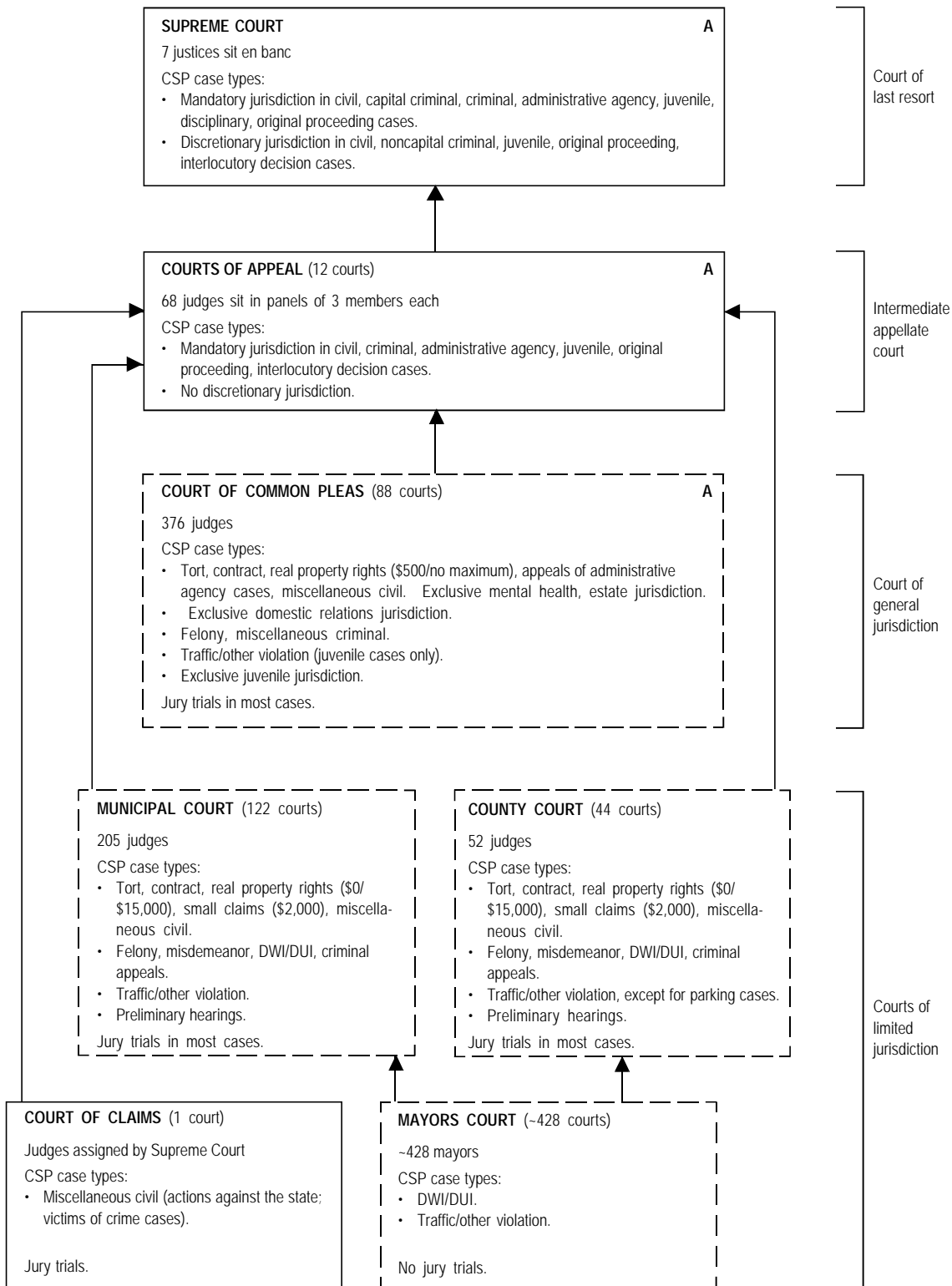
NORTH DAKOTA COURT STRUCTURE, 2002



[Table of Contents](#)

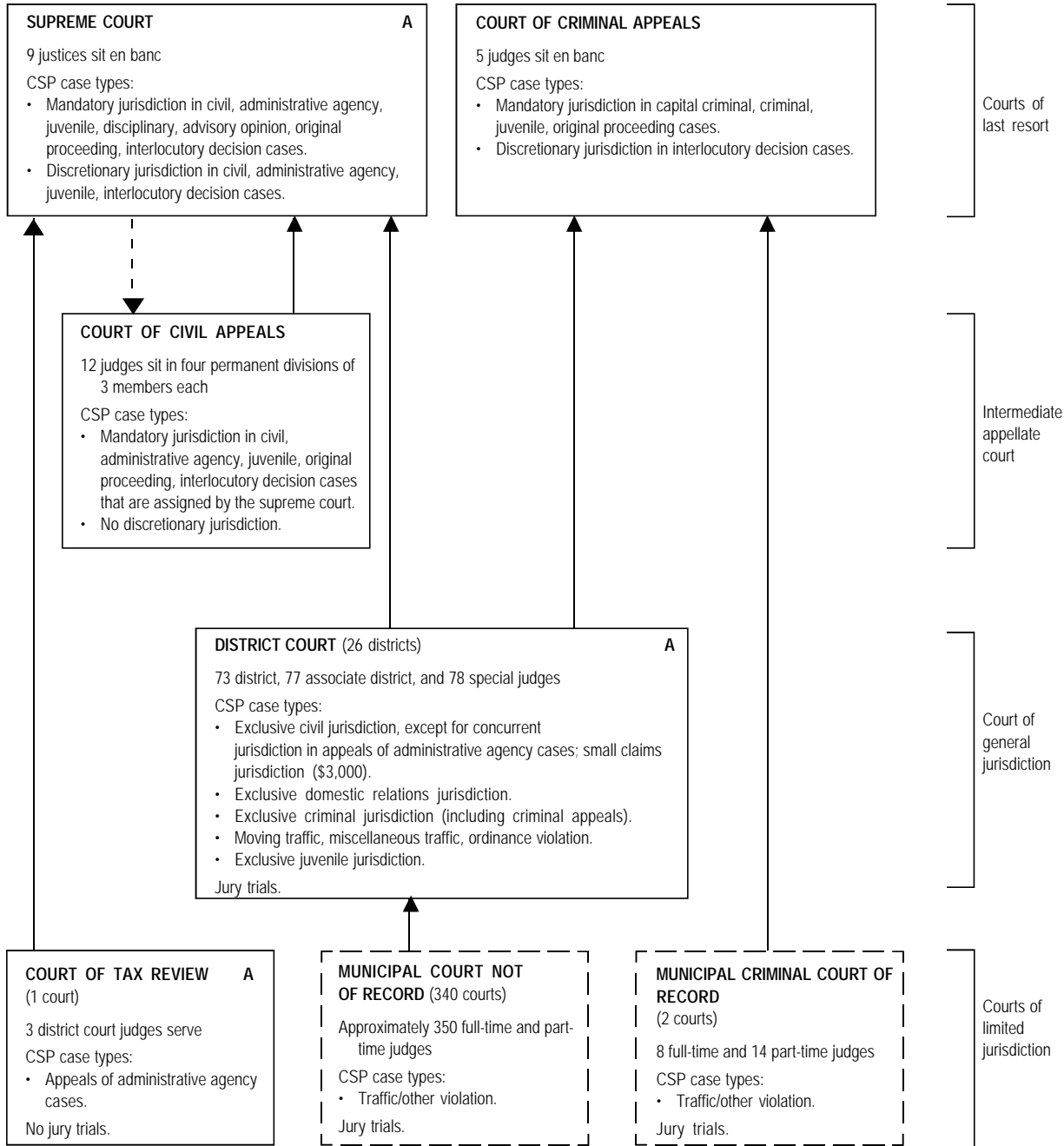
* A temporary court of appeals was established July 1, 1987, to exercise appellate and original jurisdiction as delegated by the supreme court. This court does not sit, has no assigned judges, and has heard no appeals. It is currently unfunded.

OHIO COURT STRUCTURE, 2002



[Table of Contents](#)

OKLAHOMA COURT STRUCTURE, 2002

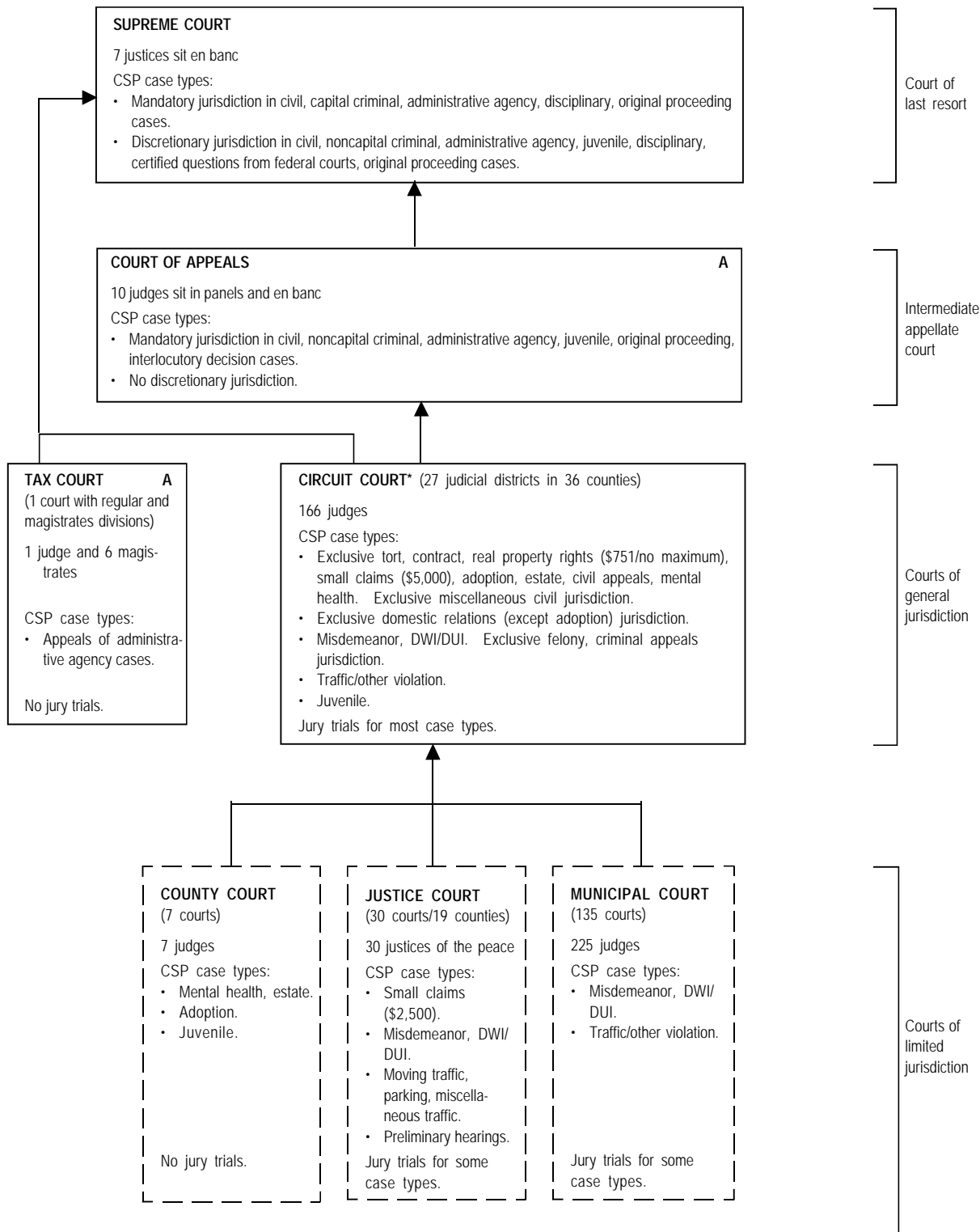


[Table of Contents](#)

- - Indicates assignment of cases.

Note: Oklahoma has a workers' compensation court, which hears complaints that are handled exclusively by administrative agencies in other states.

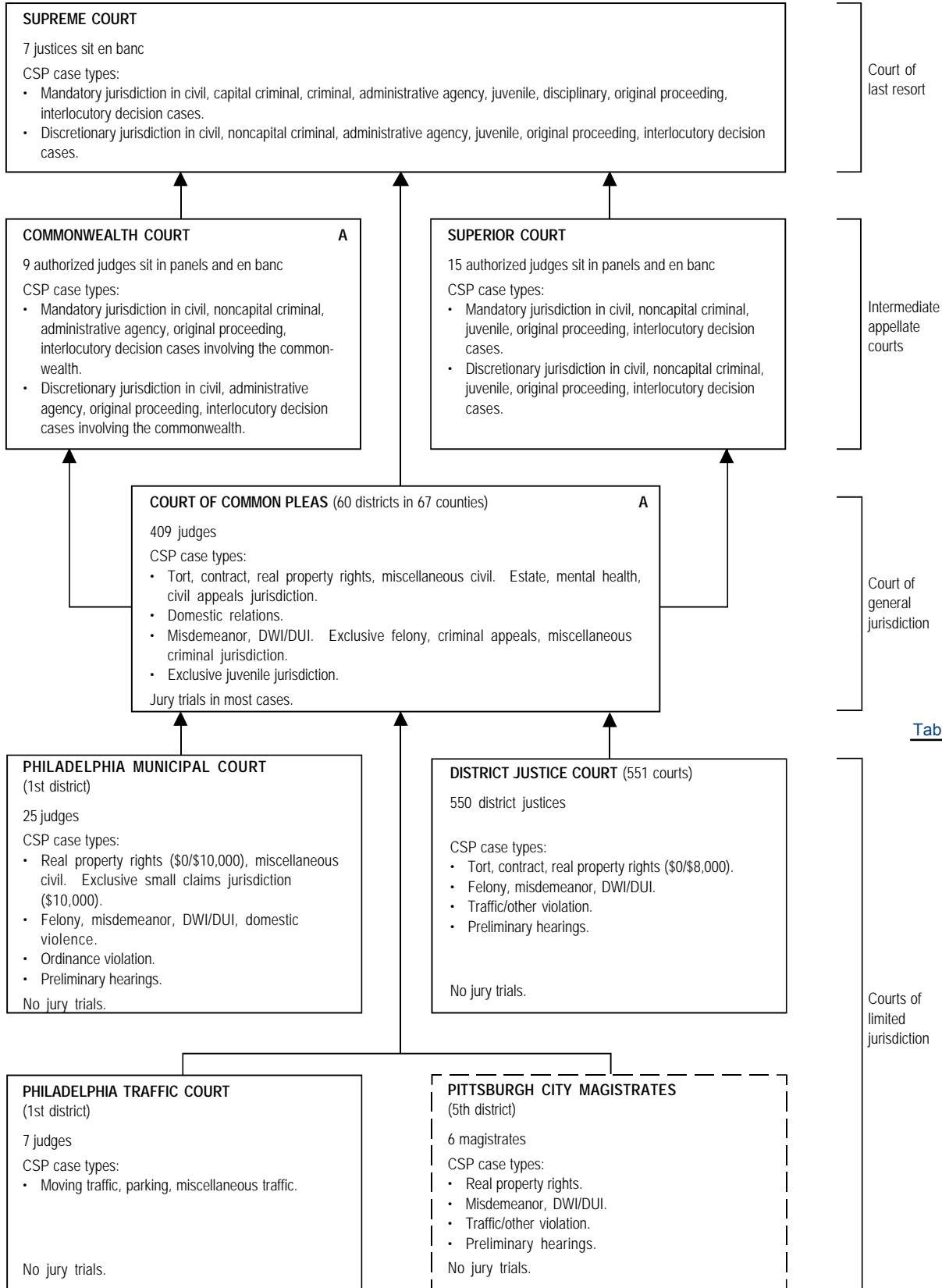
OREGON COURT STRUCTURE, 2002



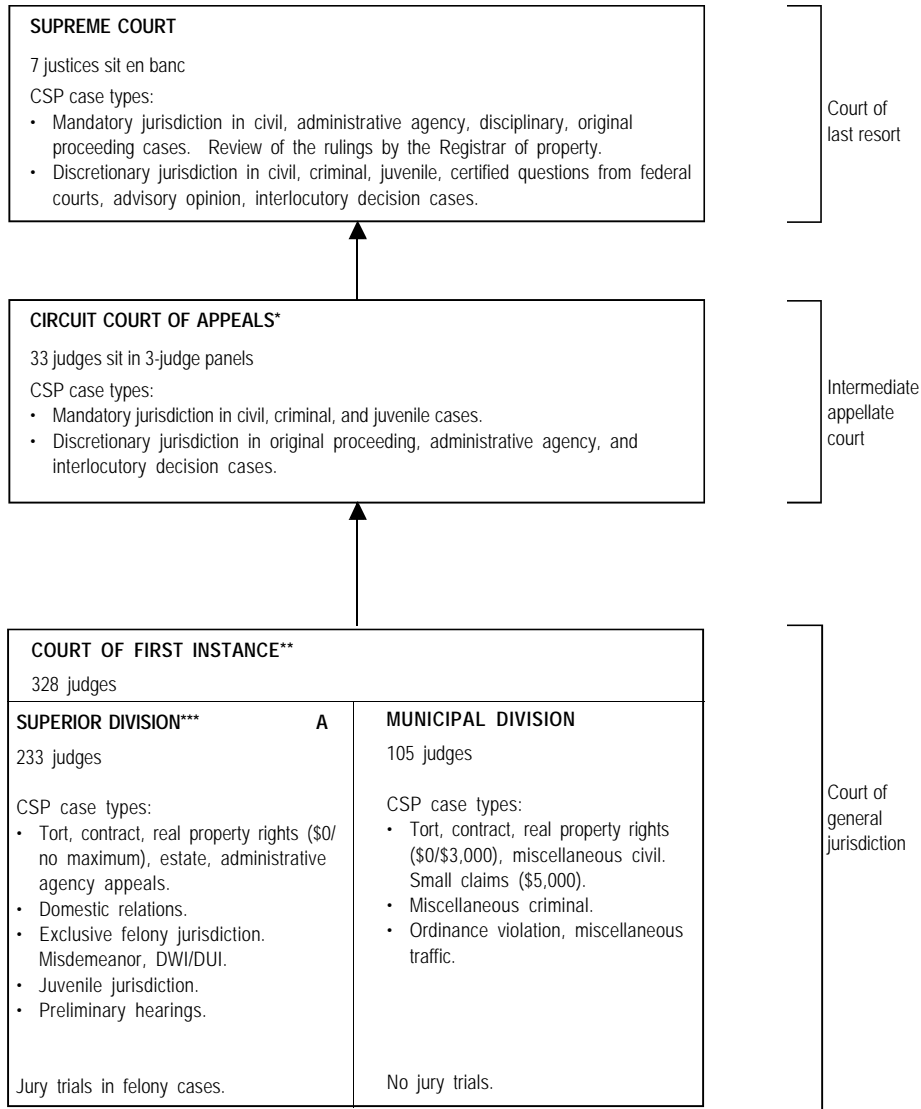
[Table of Contents](#)

* Effective January 15, 1998, all District Courts were eliminated and District judges became Circuit judges.

PENNSYLVANIA COURT STRUCTURE, 2002



PUERTO RICO COURT STRUCTURE, 2002



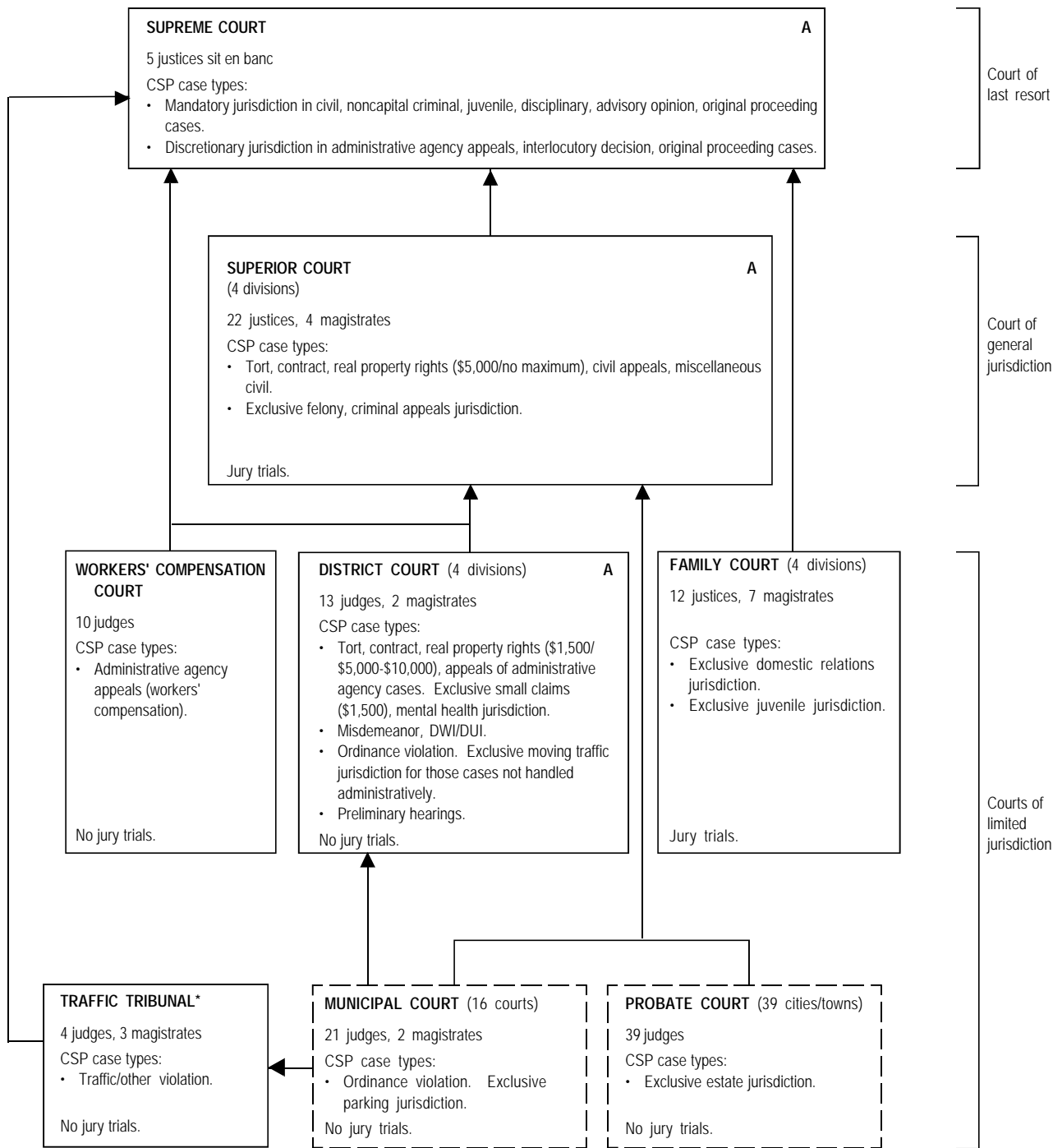
[Table of Contents](#)

*Created July 28, 1994; operational January 1, 1995.

**Created in 1994; operational in 1995.

***The Judicial Reform Act of 1994 established the abolition of the District Subsection. The District Subsection was abolished in 2002, and its functions were transferred to the Superior Division.

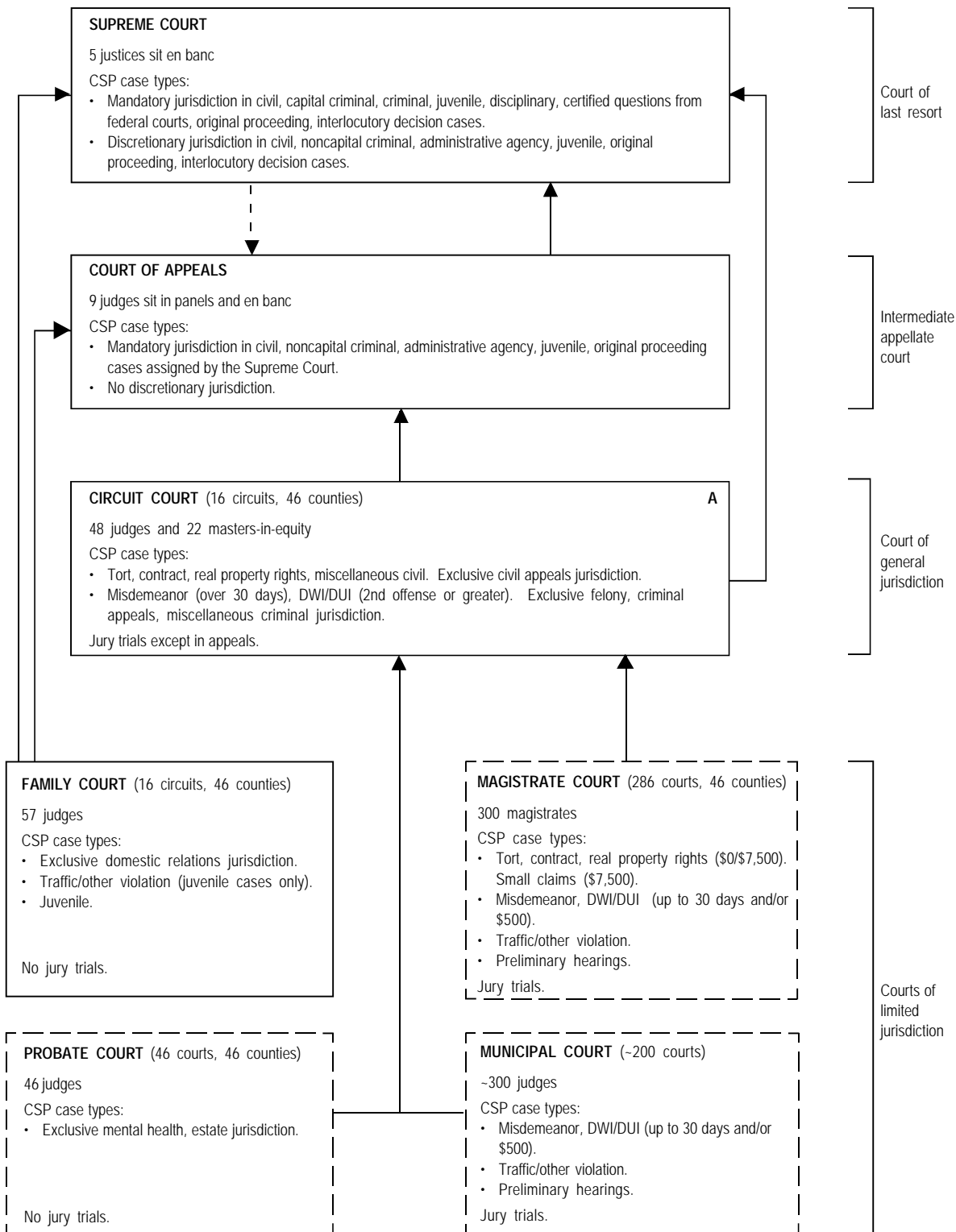
RHODE ISLAND COURT STRUCTURE, 2002



[Table of Contents](#)

* This court was formerly known as the Rhode Island Administrative Adjudication Court.

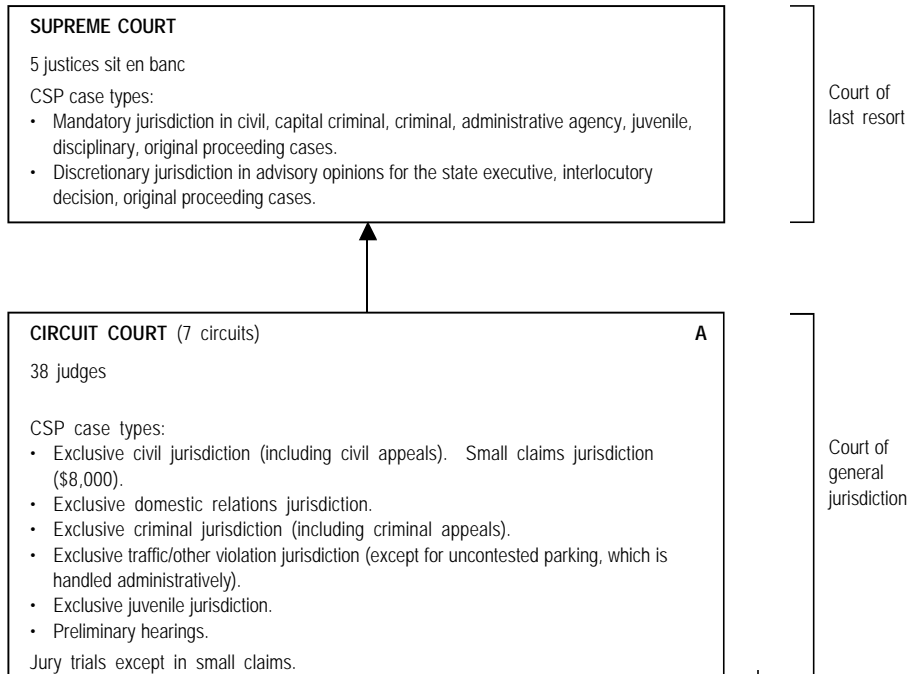
SOUTH CAROLINA COURT STRUCTURE, 2002



-- Indicates assignment of cases.

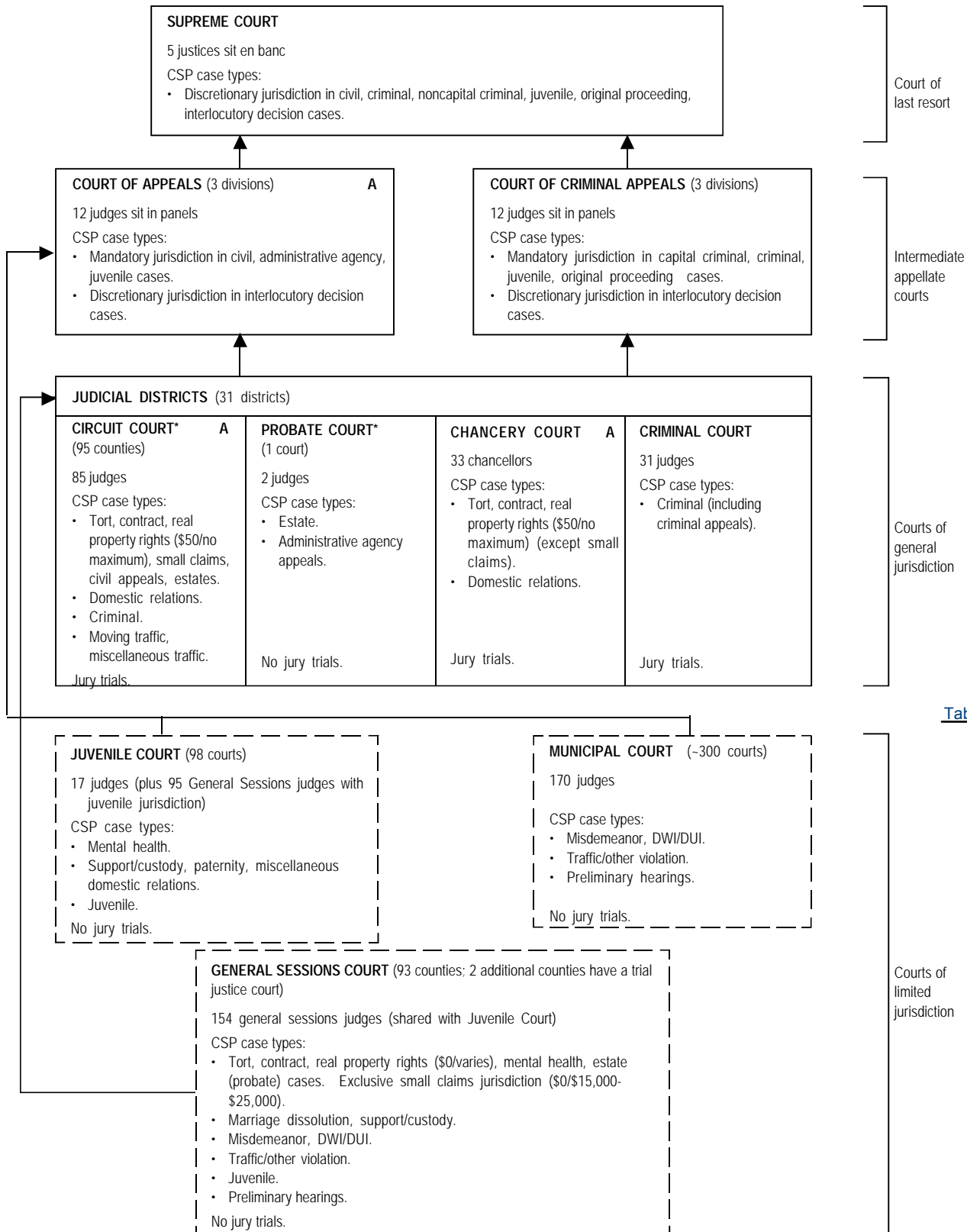
[Table of Contents](#)

SOUTH DAKOTA COURT STRUCTURE, 2002



[Table of Contents](#)

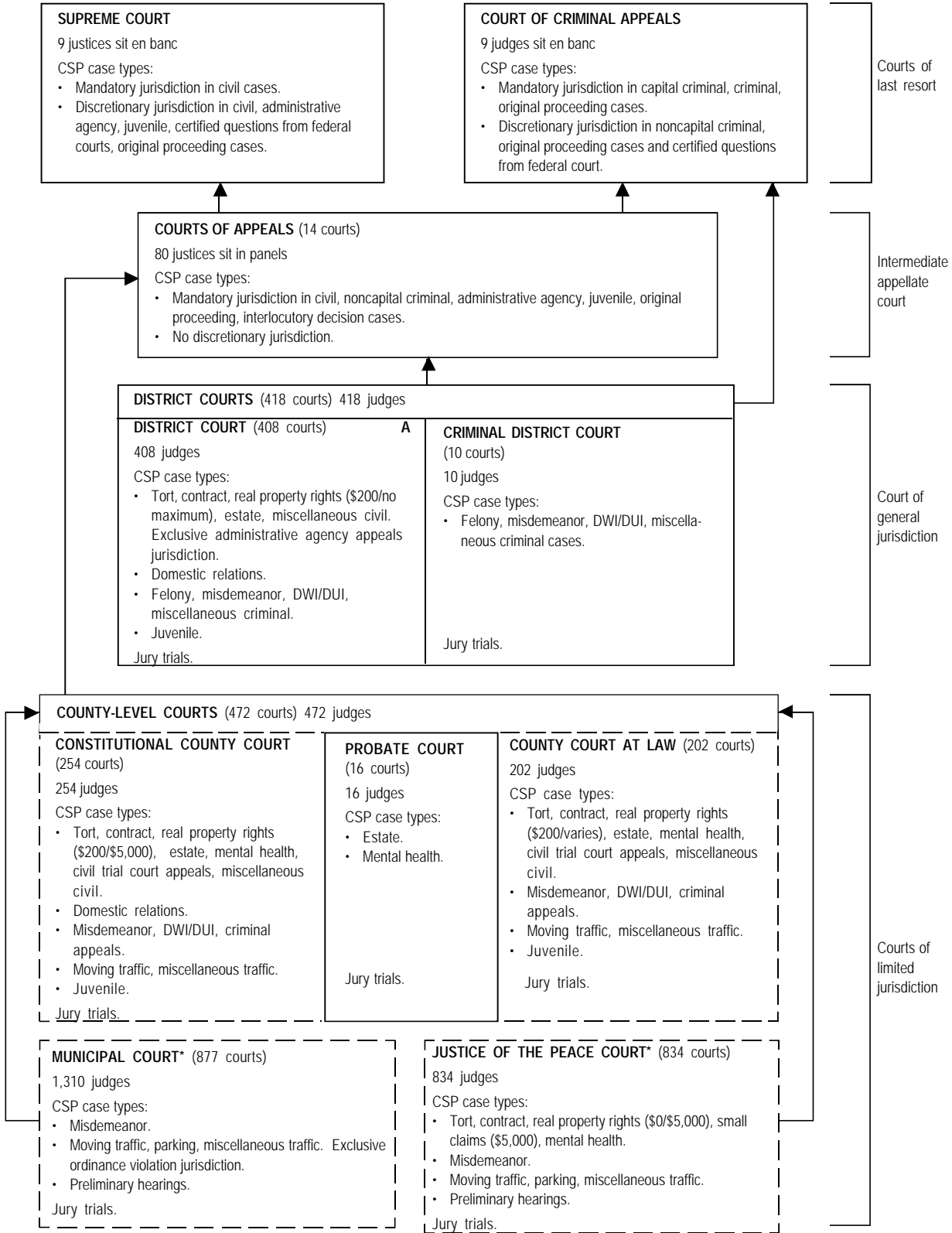
TENNESSEE COURT STRUCTURE, 2002



[Table of Contents](#)

* Effective September 1, 1998 Davidson County Probate Court became a Circuit Court with Probate jurisdiction.

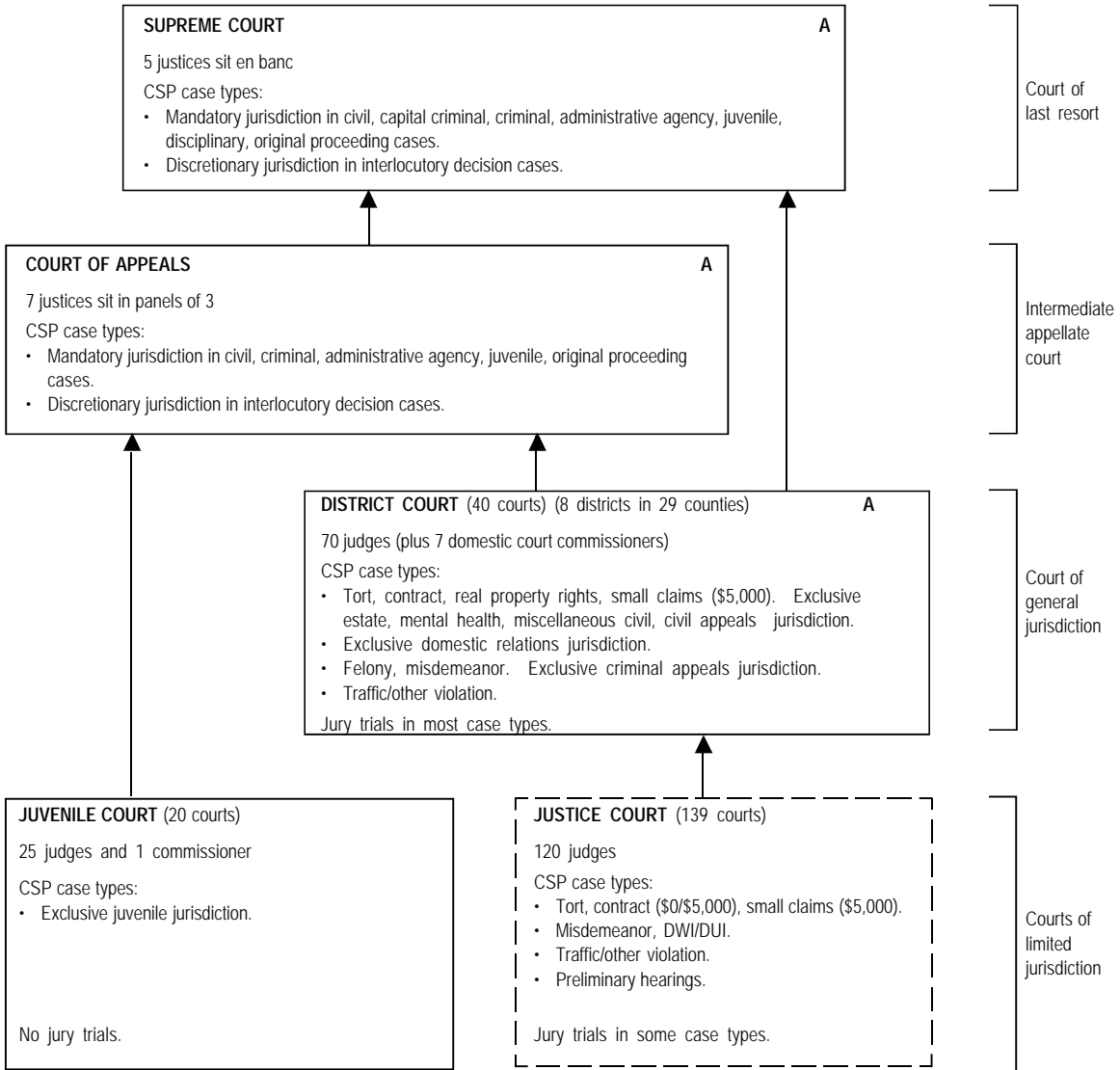
TEXAS COURT STRUCTURE, 2002



* Some municipal and justice of the peace courts may appeal to the district court.

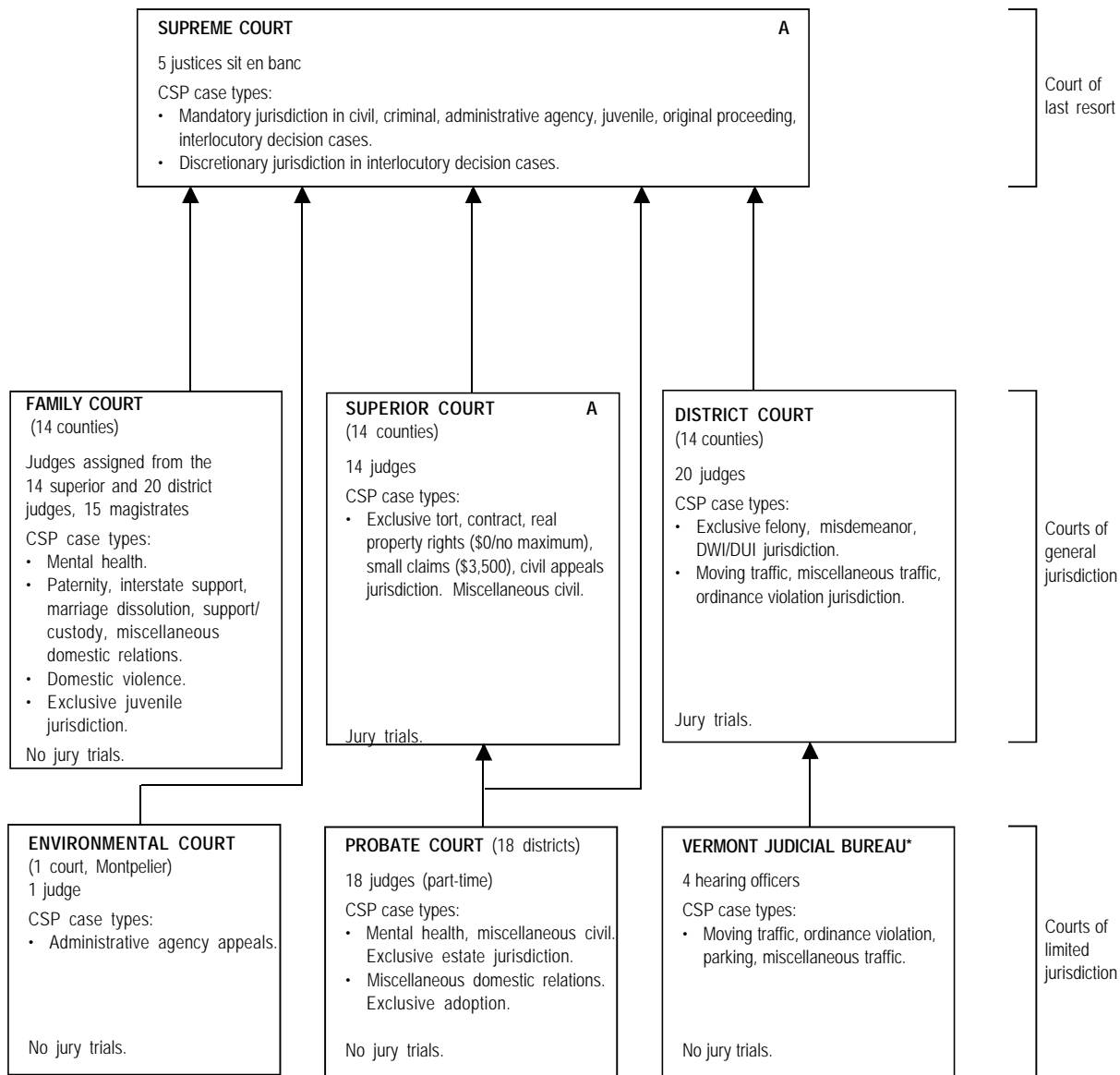
[Table of Contents](#)

UTAH COURT STRUCTURE, 2002



[Table of Contents](#)

VERMONT COURT STRUCTURE, 2002

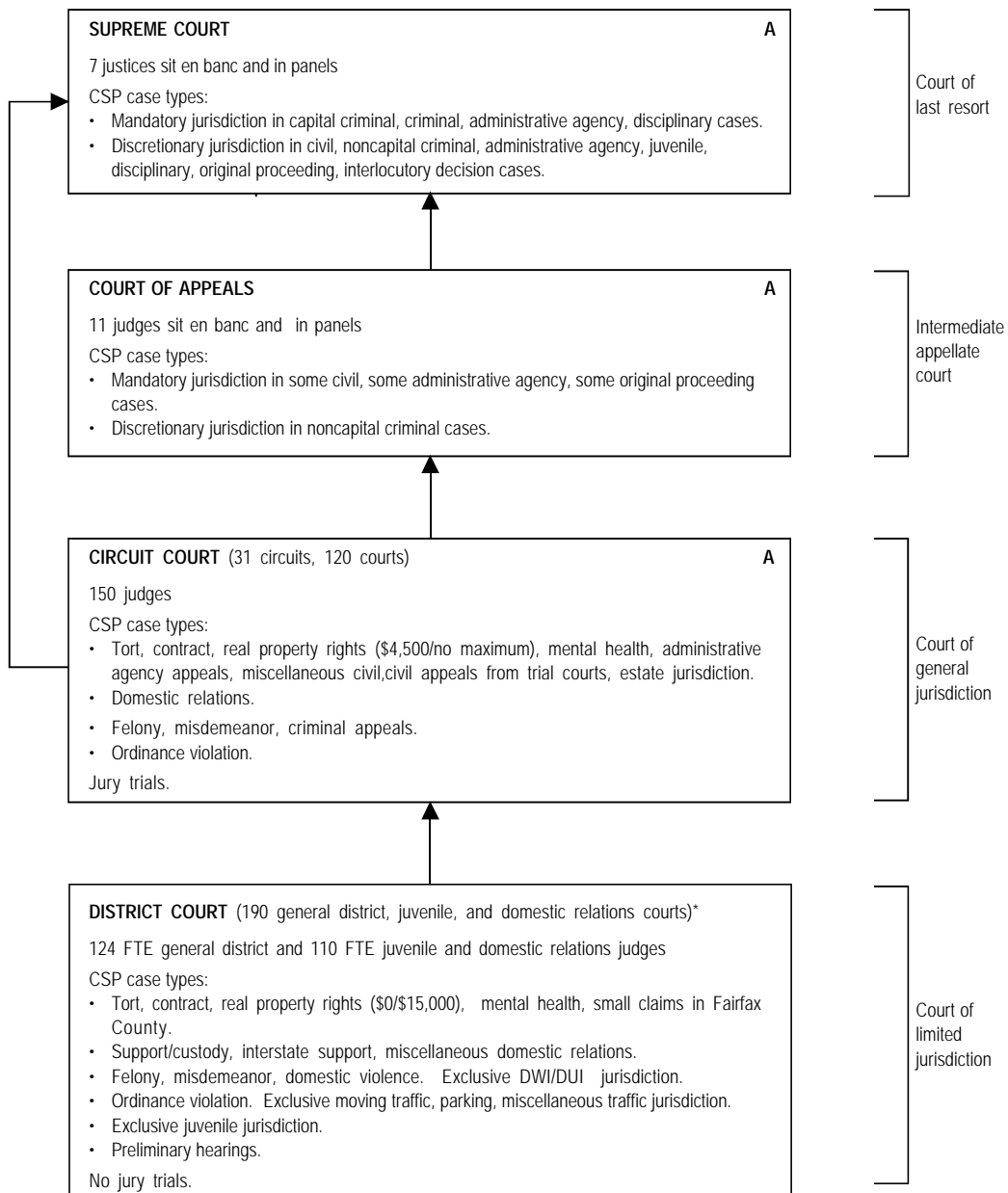


[Table of Contents](#)

* Renamed VERMONT JUDICIAL BUREAU as of 7/1/98, this court was formerly known as the Vermont Traffic and Municipal Ordinance Bureau.

Note: An additional 28 assistant judges participate in findings of fact in Superior and Family Court cases. Some assistant judges, after special training, may hear small claims cases and traffic complaints, conduct criminal arraignments, and decide child support, parentage, and uncontested divorce proceedings. These assistant judges (who need not be attorneys) are elected to four-year terms by voters in Vermont's 14 counties.

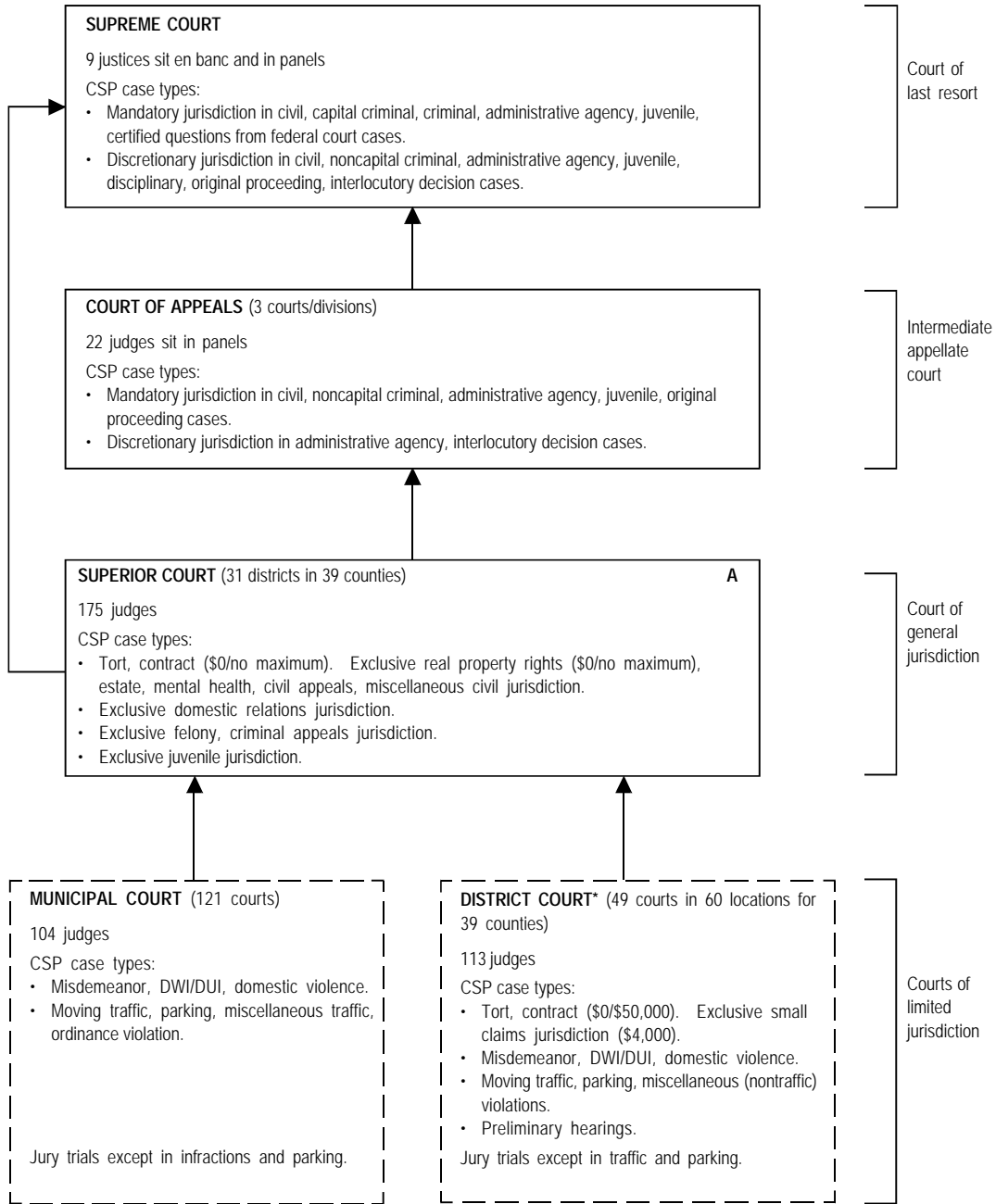
VIRGINIA COURT STRUCTURE, 2002



[Table of Contents](#)

* The district court is referred to as the juvenile and domestic relations court when hearing juvenile and domestic relations cases and as the general district court for the balance of the cases.

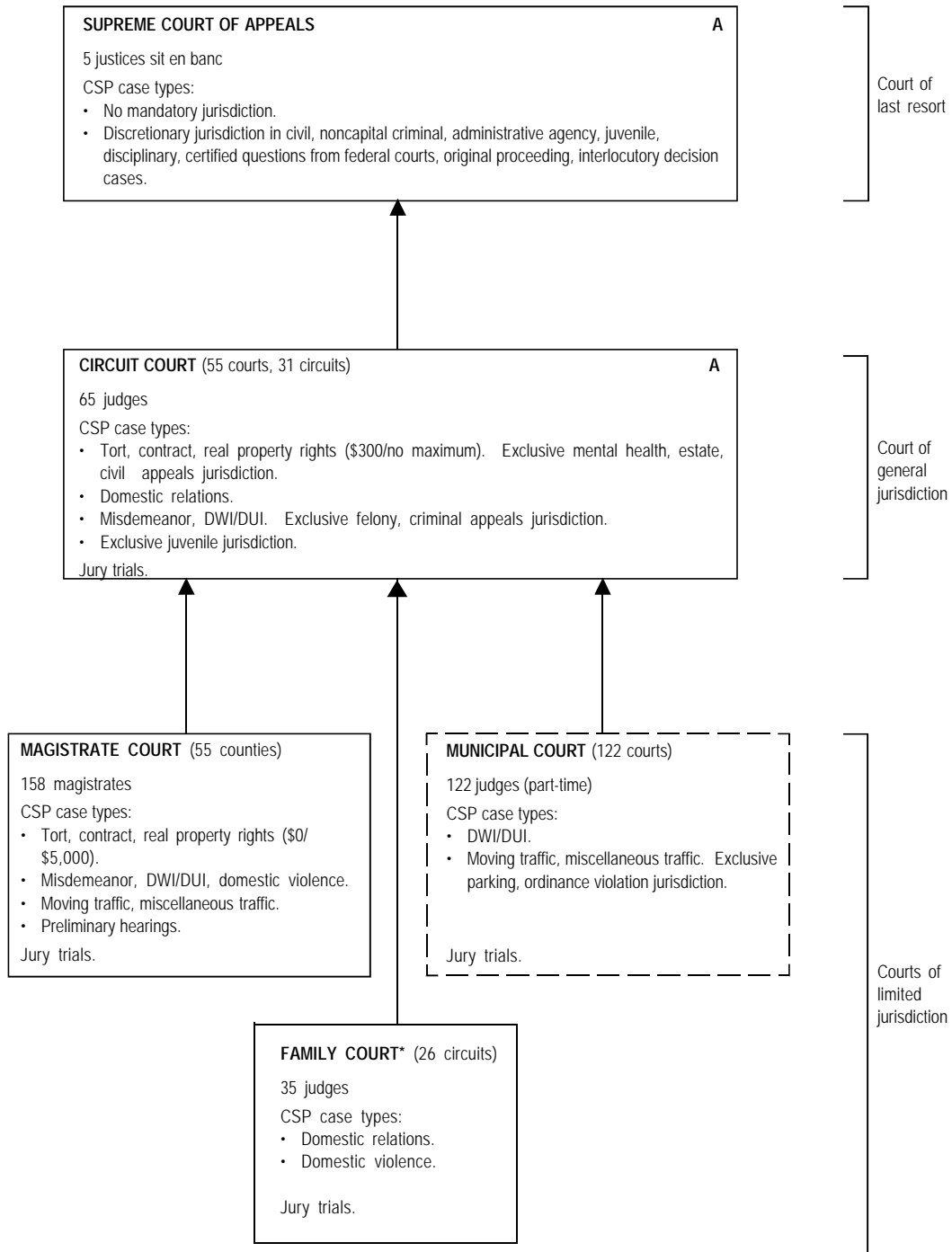
WASHINGTON COURT STRUCTURE, 2002



[Table of Contents](#)

* District court provides services to municipalities that do not have a municipal court.

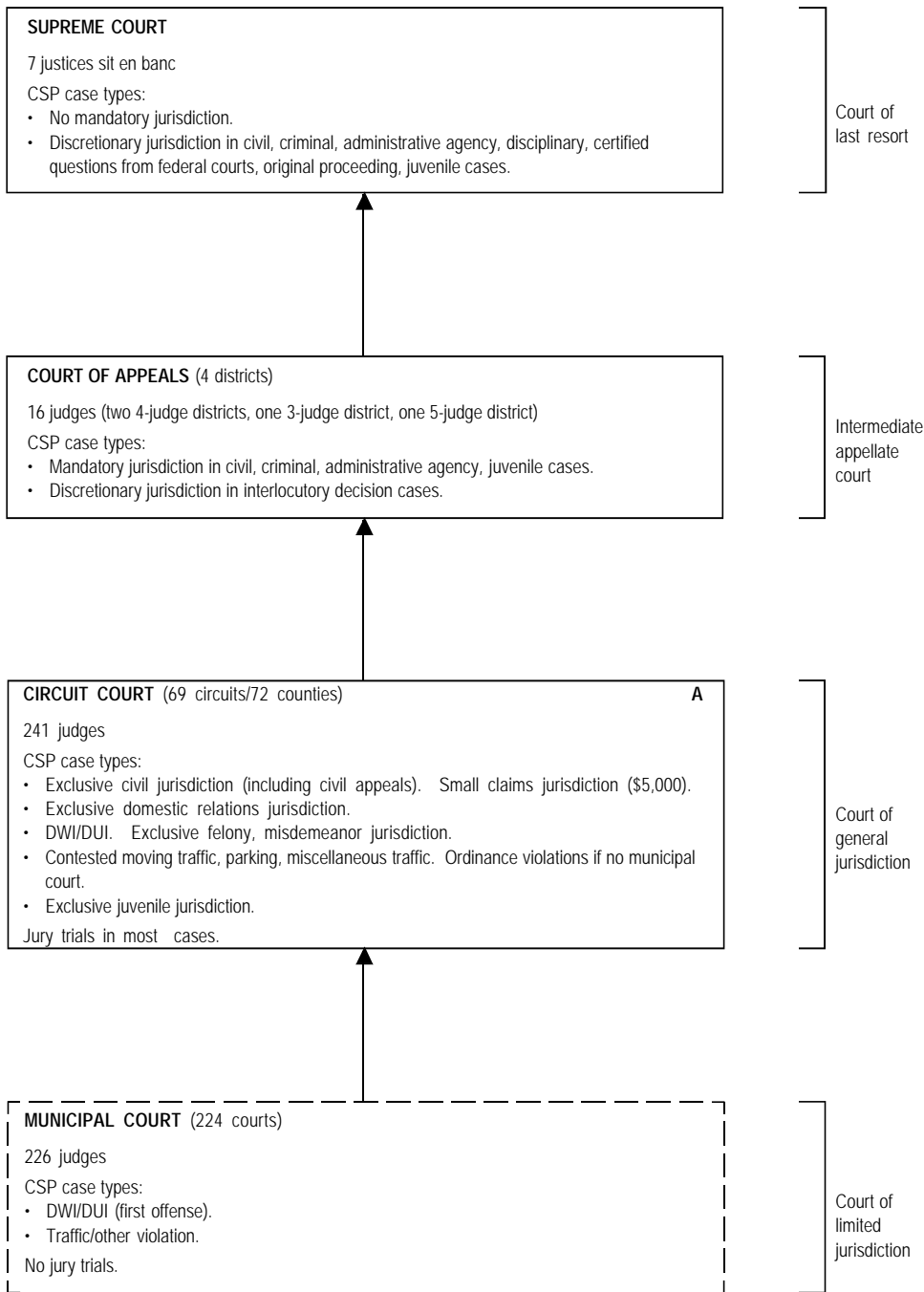
WEST VIRGINIA COURT STRUCTURE, 2002



[Table of Contents](#)

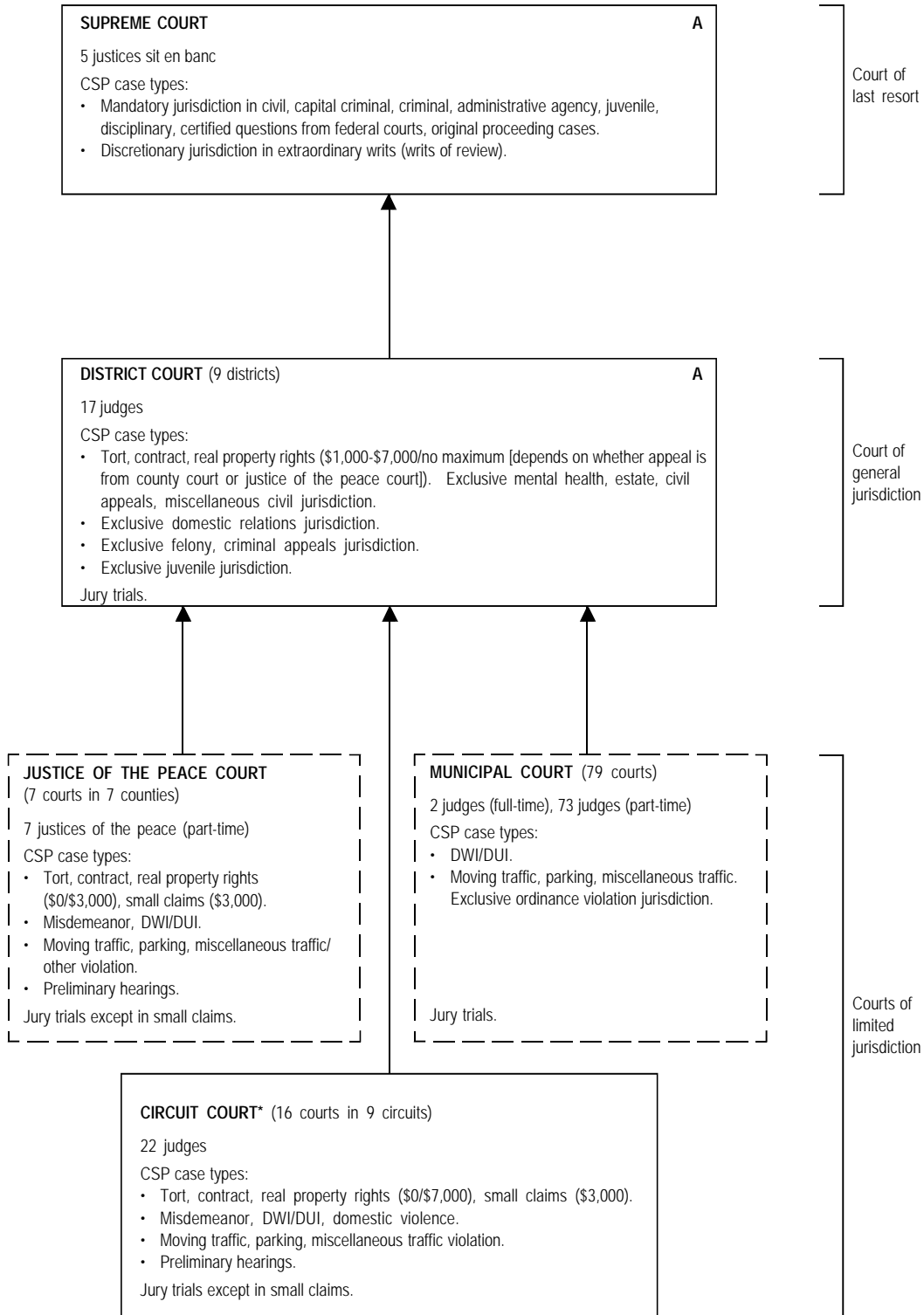
*The Family Court was created in 2002.

WISCONSIN COURT STRUCTURE, 2002



[Table of Contents](#)

WYOMING COURT STRUCTURE, 2002



[Table of Contents](#)

* County Courts were renamed Circuit Courts.

